



Test Report

Number: SZHH01082740

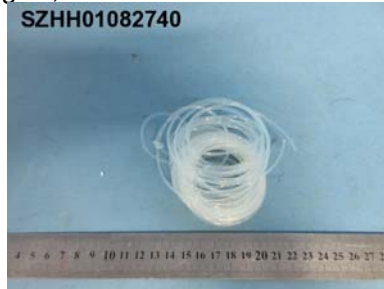
Applicant: ZHONG SHAN CITY XU LI PLASTIC CO., LTD.
DONG SHENG DEVELOPMENT ZONE,
WAN FU ROAD, DONG SHENG TOWN,
ZHONG SHAN CITY ,GUANG DONG ,
CHINA

Date: Aug 10, 2016

Attn: 刘美花

Sample Description:

One (1) submitted sample said to be **TPE-8D**.
Date Sample Received : Aug 05, 2016.



Tests conducted:

As requested by the applicant, refer to attached page(s) for details.

Conclusion:

<u>Tested Sample</u>	<u>Standard</u>	<u>Result</u>
Tested component of submitted sample	Restriction of the use of certain hazardous substance in electrical and electronic equipment (RoHS Directive 2011/65/EU and amendment Commission Delegated Directive (EU) 2015/863 with effective from 22 July 2019)	Pass

EN71-3:2013+A1:2014 on migration of certain elements	Pass
--	------

Authorized by:
For Intertek Testing Services
Shenzhen Ltd.

Ben N.L. Lin
General Manager



Intertek Testing Services Shenzhen Ltd.- Hardlines

深圳天祥质量技术服务有限公司-轻工产品事业部

301A, 302B, 6/F. 7/F Shekou Technology Main Bldg. and Room 1E of Nanshan Building,

Nanhai Ave., Nanshan District, Shenzhen, China

深圳市南山区南海大道科技大厦 301A、302B、六层、七层、南山大厦 1 楼 1E 房

Tel: (86-755) 2602 0111 Fax: (86-755) 2683 7118/9 Postcode: 518067

www.intertek.com www.intertek.com.cn China Toll-Free:400 886 9926

Attention is drawn to the terms and conditions printed overleaf.

Tests Conducted

1 RoHS Chemical Test

(A) Test Result Summary:

<u>Test item</u>	<u>Result</u>
	(1)
Cadmium (Cd) Content (mg/kg)	ND
Lead (Pb) Content (mg/kg)	ND
Mercury (Hg) Content (mg/kg)	ND
Chromium (VI)(Cr ⁶⁺) Content (mg/kg)	ND
Polybrominated Biphenyls (PBBs)(mg/kg)	
Monobromobiphenyl (MonoBB)	ND
Dibromobiphenyl (DiBB)	ND
Tribromobiphenyl (TriBB)	ND
Tetrabromobiphenyl (TetraBB)	ND
Pentabromobiphenyl (PentaBB)	ND
Hexabromobiphenyl (HexaBB)	ND
Heptabromobiphenyl (HeptaBB)	ND
Octabromobiphenyl (OctaBB)	ND
Nonabromobiphenyl (NonaBB)	ND
Decabromobiphenyl (DecaBB)	ND
Polybrominated Diphenyl Ethers (PBDEs)(mg/kg)	
Monobromodiphenyl Ether (MonoBDE)	ND
Dibromodiphenyl Ether (DiBDE)	ND
Tribromodiphenyl Ether (TriBDE)	ND
Tetrabromodiphenyl Ether (TetraBDE)	ND
Pentabromodiphenyl Ether (PentaBDE)	ND
Hexabromodiphenyl Ether (HexaBDE)	ND
Heptabromodiphenyl Ether (HeptaBDE)	ND
Octabromodiphenyl Ether (OctaBDE)	ND
Nonabromodiphenyl Ether (NonaBDE)	ND
Decabromodiphenyl Ether (DecaBDE)	ND

<u>Test item</u>	<u>Result</u>
	(1)
Dibutyl phthalate (DBP) (mg/kg)	ND
Di-(2-ethyl hexyl) phthalate (DEHP) (mg/kg)	ND
Benzyl butyl phthalate (BBP) (mg/kg)	ND
Di-(iso-butyl) phthalate (DIBP) (mg/kg)	ND

ND = Not detected

Tested Component: (1) Transparent plastic





Test Report

Number: SZHH01082740

Tests Conducted

(B) RoHS Requirement:

Restricted Substances	Limits
Cadmium (Cd)	0.01% (100 mg/kg)
Lead (Pb)	0.1% (1000 mg/kg)
Mercury (Hg)	0.1% (1000 mg/kg)
Chromium (VI) (Cr ⁶⁺)	0.1% (1000 mg/kg)
Polybrominated Biphenyls (PBBs)	0.1% (1000 mg/kg)
Polybrominated Diphenyl Ethers (PBDEs)	0.1% (1000 mg/kg)
Dibutyl phthalate (DBP)	0.1% (1000 mg/kg)
Di-(2-ethyl hexyl) phthalate (DEHP)	0.1% (1000 mg/kg)
Benzyl butyl phthalate (BBP)	0.1% (1000 mg/kg)
Di-(iso-butyl) phthalate (DIBP)	0.1% (1000 mg/kg)

The above limits were quoted from Directive 2011/65/EU and amendment Commission Delegated Directive (EU) 2015/863 for homogeneous material.

(C) Test Method:

Testing Item	Testing Method	Reporting Limit
Mercury (Hg) Content	With reference to IEC 62321-4 Edition 1.0:2013, by acid digestion and determined by ICP - OES	2 mg/kg
Cadmium (Cd) Content	With reference to IEC 62321-5 Edition 1.0:2013, by acid digestion and determined by ICP - OES	2 mg/kg
Lead (Pb) Content	With reference to IEC 62321-5 Edition 1.0:2013, by acid digestion and determined by ICP - OES	2 mg/kg
Polybrominated Biphenyls (PBBs) & Polybrominated Diphenyl Ethers (PBDEs)	With reference to IEC 62321-6 Edition 1.0:2015, by solvent extraction and determined by GC/MS and further HPLC confirmation when necessary	5 mg/kg
Chromium (VI)(Cr ⁶⁺) Content	With reference to IEC 62321 Edition 1.0:2008, by alkaline digestion and determined by UV-VIS Spectrophotometer	1 mg/kg
Dibutyl phthalate (DBP) & Di-(2-ethyl hexyl) phthalate (DEHP) & Benzyl butyl phthalate (BBP) & Di-(iso-butyl) phthalate (DIBP)	With reference to EN 14372, by Gas Chromatographic-Mass Spectrometric (GC-MS) analysis	100mg/kg



Intertek Testing Services Shenzhen Ltd.- Hardlines

深圳天祥质量技术服务有限公司-轻工产品事业部

301A, 302B, 6/F. 7/F Shekou Technology Main Bldg. and Room 1E of Nanshan Building,

Nanhai Ave., Nanshan District, Shenzhen, China

深圳市南山区南海大道科技大厦 301A、302B、六层、七层、南山大厦 1 楼 1E 房

Tel: (86-755) 2602 0111 Fax: (86-755) 2683 7118/9 Postcode: 518067

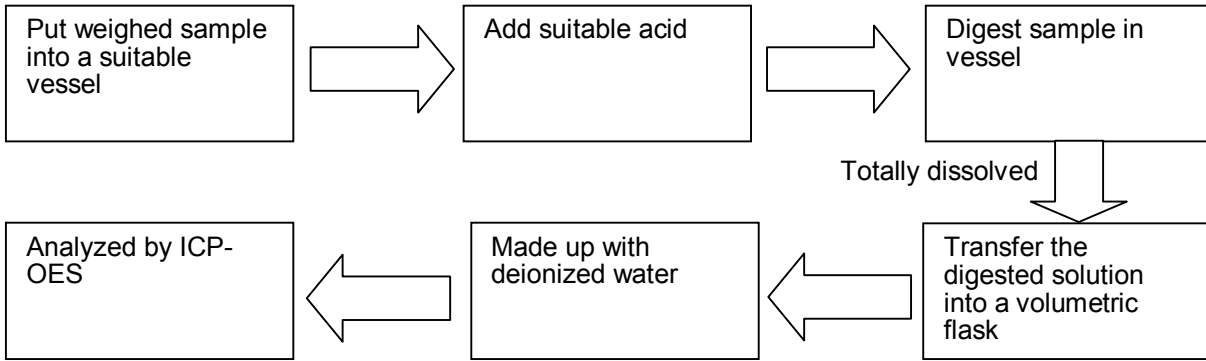
www.intertek.com www.intertek.com.cn China Toll-Free:400 886 9926

Attention is drawn to the terms and conditions printed overleaf.

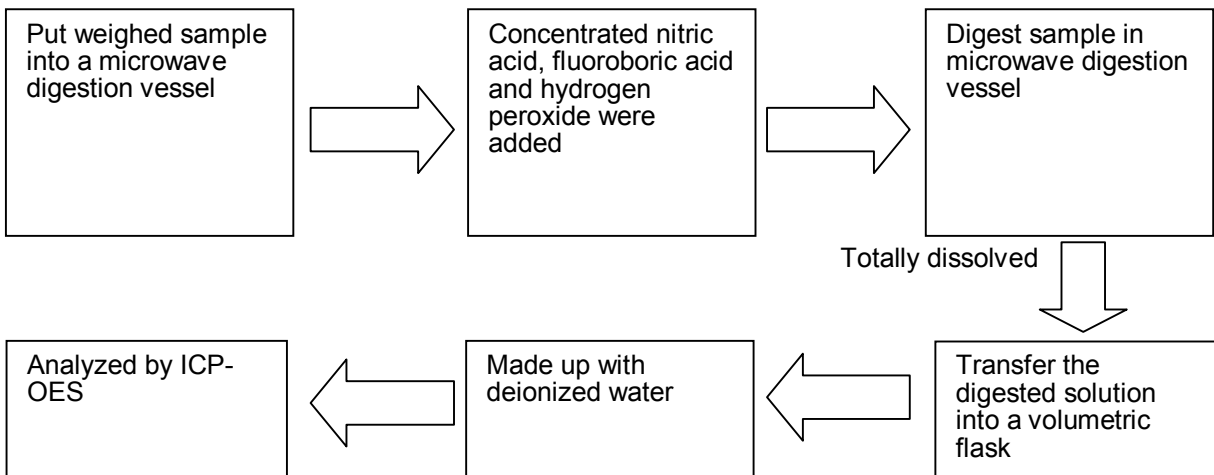
Tests Conducted

(D) Measurement Flowchart:

1. Test for Cd/Pb Contents



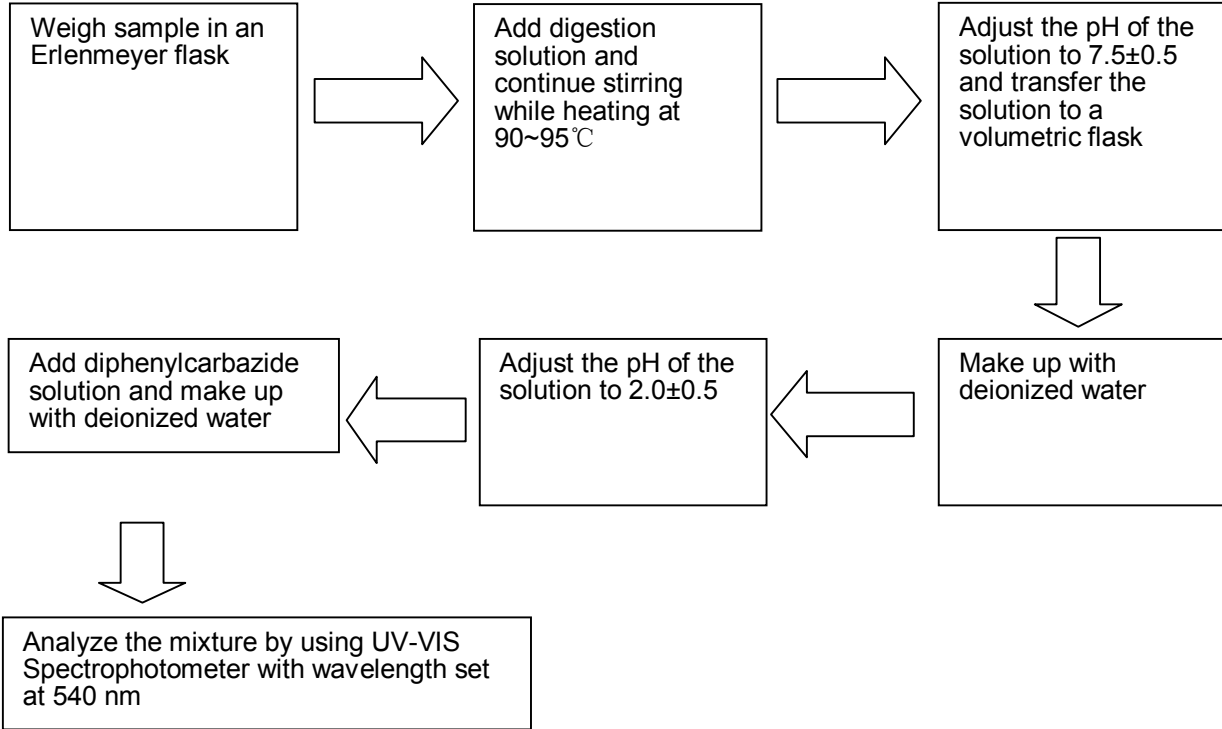
2. Test for Hg Content





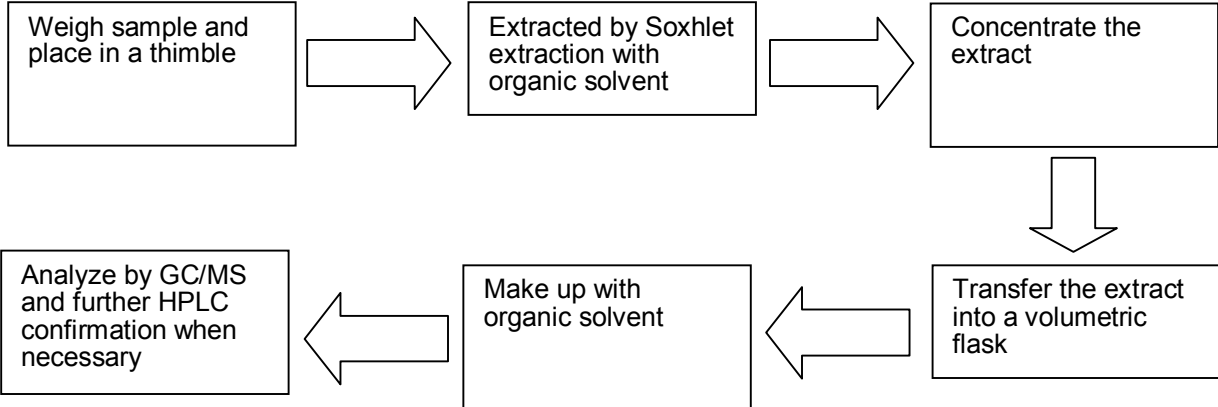
Tests Conducted

3. Test for Chromium (VI) (Cr^{6+}) Content (Alkaline Digestion)

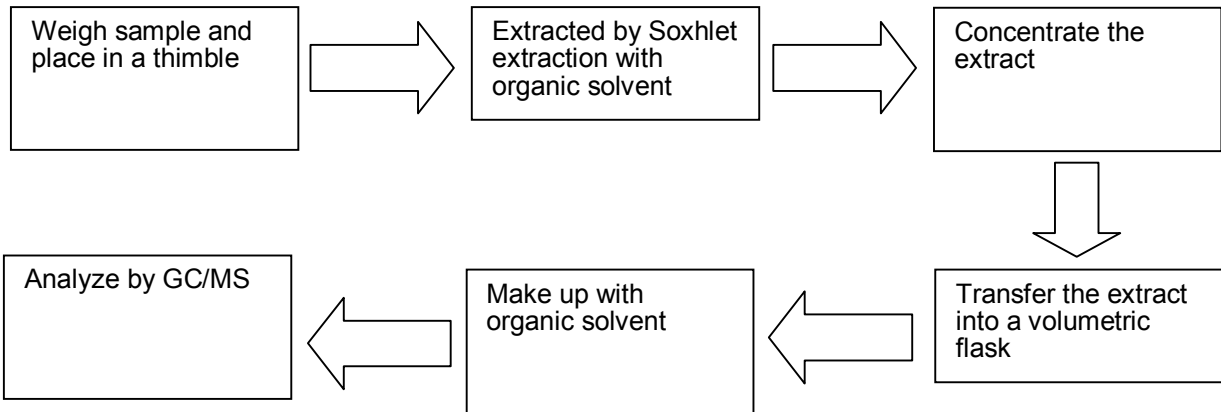


Tests Conducted

4. Test for PBBs/PBDEs Contents



5. Test for Phthalate Contents





Test Report

Number: SZHH01082740

Tests Conducted

2 19 Toxic Element Migration Test

(A) Test Result

As per EN71-3:2013+A1:2014 and followed by Inductively Coupled Plasma Atomic Emission Spectrometry, Inductively Coupled Argon Mass Spectrometry, Ion Chromatography- Inductively Coupled Plasma-Mass Spectrometry, and Gas Chromatographic - Mass Spectrometry.

Category (III): Scraped-off toy material

Element	Result (mg/kg)		Reporting Limit (mg/kg)	Limit (mg/kg)
	Tested Component			
	(1)			
Aluminium (Al)	ND		300	70000
Antimony (Sb)	ND		10	560
Arsenic (As)	ND		10	47
Barium (Ba)	ND		10	18750
Boron (B)	ND		50	15000
Cadmium (Cd)	ND		5	17
Chromium (III) (Cr III) **	ND		10	460
Chromium (VI) (Cr VI) **	ND		0.1	0.2
Cobalt (Co)	ND		10	130
Copper (Cu)	ND		10	7700
Lead (Pb)	ND		10	160
Manganese (Mn)	ND		10	15000
Mercury (Hg)	ND		10	94
Nickel (Ni)	ND		10	930
Selenium (Se)	ND		10	460
Strontium (Sr)	ND		100	56000
Tin (Sn)	ND		10	180000
Organic tin **	ND		2.0	12
Zinc (Zn)	ND		100	46000

Remark : mg/kg = milligram per kilogram

ND = Not detected

++ = Unless the test results were marked with "#" or "Δ", Chromium (III) & Chromium (VI) and Organic tin contents were not directly determined and were derived from migration results of total chromium and tin respectively.

- Organic tin test result was expressed as tributyl tin.

= Confirmation of Chromium (VI) test was performed on the tested component. And the reported value of migration of Chromium (III) = migration value of total Chromium – migration value of Chromium(VI).

Δ = Confirmation test was performed on the tested component. The reported value was the sum of the migration values of Methyl tin, Butyl tin, Dibutyl tin, Tributyl tin, Tetrabutyl tin, n-Octyl tin, Di-n-octyl tin, Di-n-propyl tin, Diphenyl tin and Triphenyl tin after converted to Tributyl tin by calculation.

Tested Component: (1) Transparent plastic.



Intertek Testing Services Shenzhen Ltd.- Hardlines

深圳天祥质量技术服务有限公司-轻工产品事业部

301A, 302B, 6/F. 7/F Shekou Technology Main Bldg. and Room 1E of Nanshan Building,

Nanhai Ave., Nanshan District, Shenzhen, China

深圳市南山区南海大道科技大厦 301A、302B、六层、七层、南山大厦 1 楼 1E 房

Tel: (86-755) 2602 0111 Fax: (86-755) 2683 7118/9 Postcode: 518067

www.intertek.com www.intertek.com.cn China Toll-Free:400 886 9926

Attention is drawn to the terms and conditions printed overleaf.



Test Report

Number: SZHH01082740

Tests Conducted

(B) Categories of various toy materials

Category I: Dry, brittle, powder like or pliable

Solid toy material from which powder-like material is released during playing and semi-solid materials that may also leave residues on the hands during play. The material can be ingested. Contamination of the hands with the material may contribute to the oral exposure of the material. (e.g. the cores of colouring pencils, chalk, crayons, modelling clays and plaster).

Category II: Liquid or sticky

Fluid or viscous toy material, which can be ingested or to which dermal exposure may occur during playing. (e.g. liquid paints, finger paints, liquid ink in pens, glue sticks, slimes, bubble solution).

Category III : Scraped-off

Solid toy material with or without a coating, which can be ingested as a result of biting, tooth scraping, sucking or licking. (e.g. coatings, lacquers, plastics, paper, textiles, glass, ceramic, metallic, wooden, bone , leather and other materials).

End of report

This report is made solely on the basis of your instructions and/or information and materials supplied by you. It is not intended to be a recommendation for any particular course of action. Intertek does not accept a duty of care or any other responsibility to any person other than the Client in respect of this report and only accepts liability to the Client insofar as is expressly contained in the terms and conditions governing Intertek's provision of services to you. Intertek makes no warranties or representations either express or implied with respect to this report save as provided for in those terms and conditions. We have aimed to conduct the review on a diligent and careful basis and we do not accept any liability to you for any loss arising out of or in connection with this report, in contract, tort, by statute or otherwise, except in the event of our gross negligence or wilful misconduct.